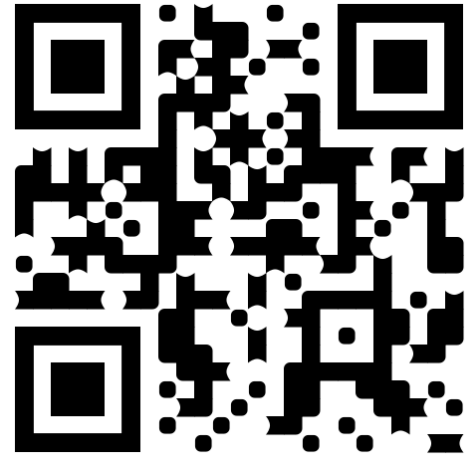


# STRONG CROSSBAR FOR RAV4



Installation  
Video

PLEASE WATCH THE INSTALLATION  
VIDEO FOR A BETTER UNDERSTANDING

WHATSAPP



FACEBOOK  
MESSENGER



## LIVE CHAT SUPPORT

IF YOU ARE MISSING ANY PARTS OF THE PRODUCT OR HAVING TROUBLES IN THE INSTALLATION PROCESS, PLEASE DO NOT RETURN THE PRODUCT BEFORE TEXTING US VIA THE QR CODES BESIDE. OUR LIVE AGENTS WILL BE HAPPY TO ASSIST YOU.

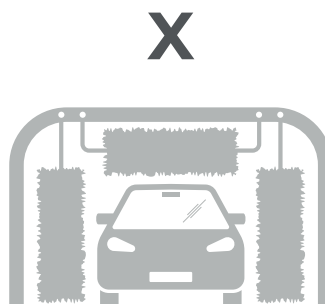
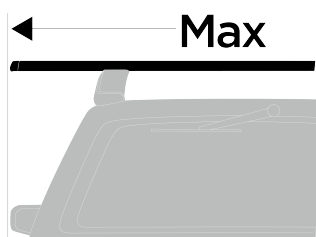
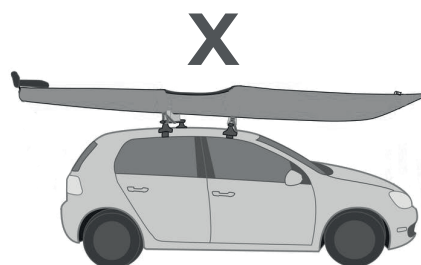
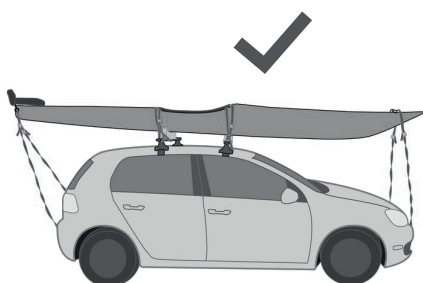
You can also e-mail us for any other questions or further assistance.

[support@erkulauto.com](mailto:support@erkulauto.com)

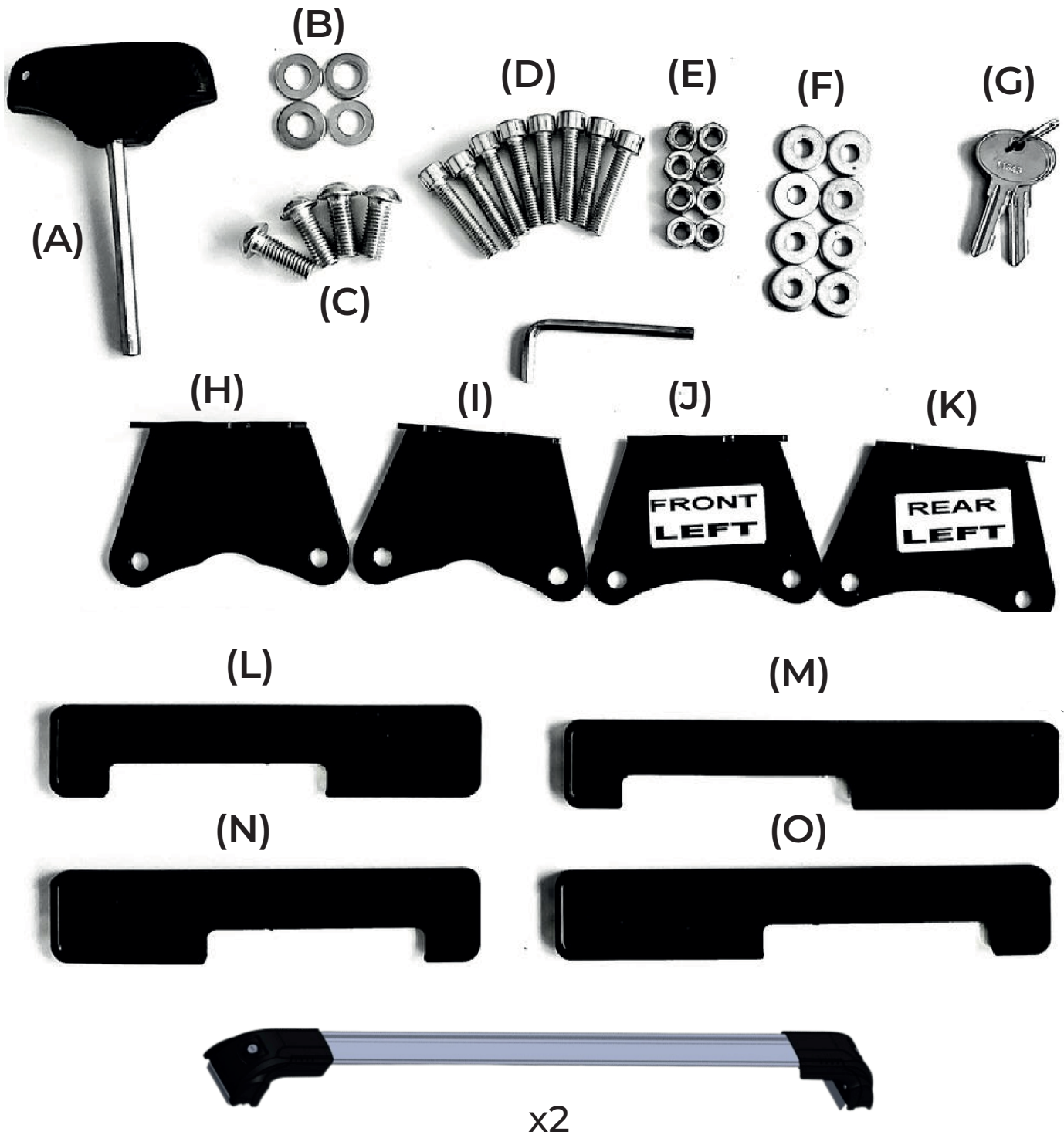


## ATTENTION

- Don't cut the bars or scrape the plastic headers! These crossbars are vehicle specific and bar lengths vary by model.
- If one bar is longer than the other, the front of your vehicle is wider than the back.
- In this case, install the longer bar on the front and the shorter bar on the rear.
- If you can't fit it, there may be a point you missed.
- If you cut the bars and don't insert cross bars fully into the mount, the bars carrying capacity will decrease. In this case, Erkul Auto will not accept responsibility.
- If you need assistance please do not hesitate to contact us via your shopping channel.



# PACKAGE INCLUDED

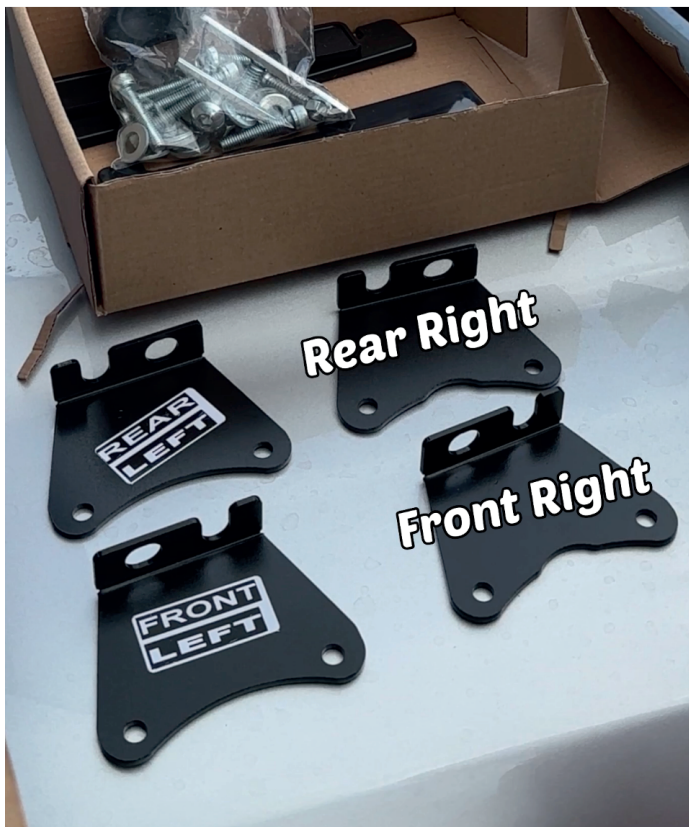


1)



There are 2 crossbars in the box. One of the bars is longer than the other one, use that one for the front side.

2)



There are 4 metal brackets.(H-I-J-K) Rear left and front left ones are labelled, match the other 2 according to them.

3)



**You can see R (right) and L (left) marks under the brackets**

You can see Left and Right marks under the brackets.

We are starting from the right side of front bar.

4)



**Insert the nuts first**

Insert the nuts (E) into the plastic like this picture.

5)

**Then, insert screws to washers**



Then, insert screws (D) to the washers (F).

6)



**Do not fully tighten them.  
They should only be tightened  
to stay in place.**

Connect the metal bracket (which is for front right side - H) to the end mounts with the the screw that you inserted in the former step.

Do not fully tighten them. They should only be tightened to stay in place.

7)



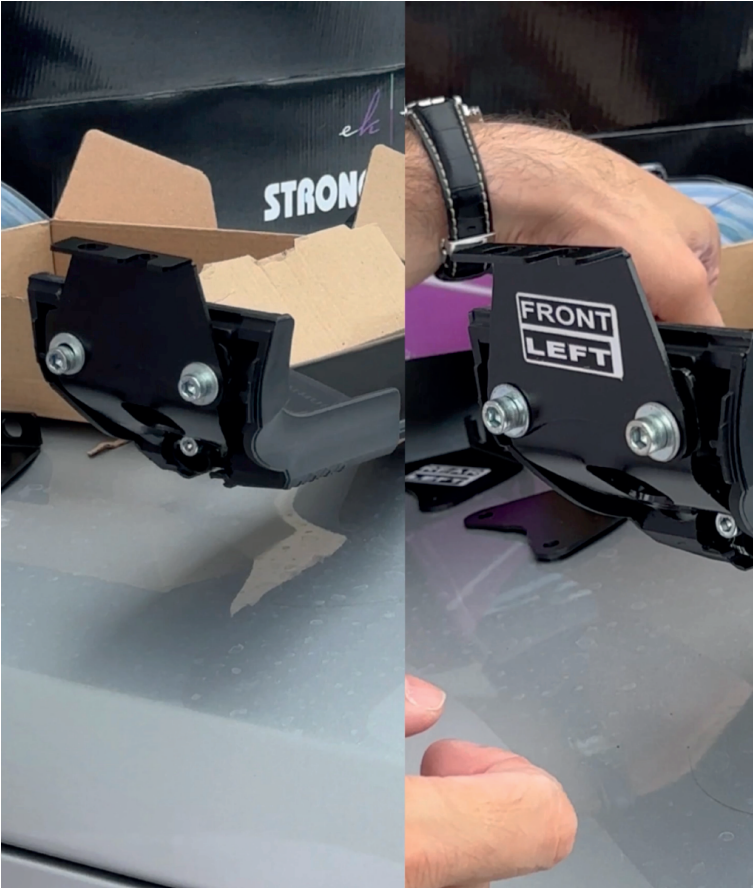
Move to the other side,  
open the cover.

8)



Repeat steps 3-6 for the  
left side, too. Use the  
suitable bracket (J) for  
front left side.

9)



Both sides of the bar should look like that.

10)



Open the covers of the holes on the roof.

11)



**R (right) refers to passenger side  
L (left) refers to the driver side**

Place the bar to the hole by paying attention to the R (right) and L (left) marks. R means passenger side and L means driver side.



Do not place the other side in order to fit this side easily.

12)



Tighten the brackets using screw C.

13)



Then, tighten the horizontal screws.

14)



Repeat steps 11-13 for the left side, too.

15)



Cover the holes using suitable pieces.  
(L-M-N-O)

16)



Lock the covers.

Repeat all of those steps for the rear bar, too.



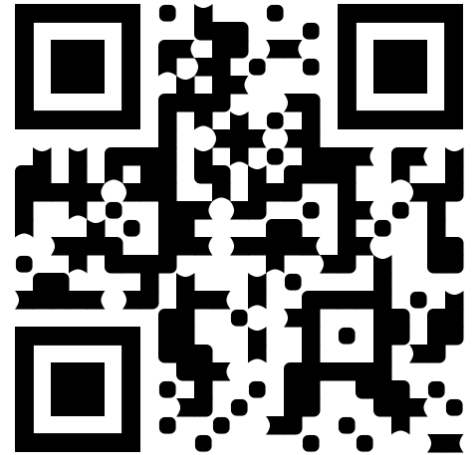
# SAFETY PRECAUTIONS!

1. Confirm that you have all required parts by checking the assembly instructions.
2. Regularly check for worn-out or damaged parts and replace them.
3. Regularly clean and maintain the load bars, especially during the winter.
4. Store all loose parts in a safe place when the product is removed.
5. Review and follow the assembly instructions and the suggestion list. Complete each step in the order recommended.
6. With the load bars installed, some sunroofs and/or radio antennas may not be operable, or some of their functions may be limited.
7. Except where otherwise stated in the mounting instructions, the load bars can be installed on cars with sunroofs.
8. Keep a minimum gap of 27 inches (700 mm) between the load bars.
9. Keep a minimum distance of 23 inches (600mm) between the load bars while carrying heavy loads.
10. Ensure that the load bars are securely mounted on the roof each time they are installed. To check the security of the bars, firmly grasp them and attempt to move them forward and backwards, as well as side to side. If any part of the unit moves, the mounting screws must be tightened to prevent movement. Check the security of the load bars on a regular basis.
11. Do not exceed the maximum load limit of 165lbs (75kg). This limit may be less depending on the maximum roof load recommended by the vehicle manufacturer. Always defer to the lowest maximum suggested roof load.
12. The maximum roof load is equal to the weight of the load bars plus any installed carrier accessories plus the weight of the load itself.
13. Any items carried on the load bars **MUST** be securely fastened. The use of elastic bungees is not safe.

# SAFETY PRECAUTIONS!

14. Surfboards and other long items must be fastened at both the front and back of the vehicle when being transported.
15. When transporting multiple surfboards, stack them one on top of the other rather than next to each other.
16. The load must not be wider than the load bars width, and it must be equally distributed across the bars with the lowest possible center of gravity.
17. Prior to loading, all loose or removable pieces of the load, such as bicycle child seats, tire pumps, surfboard fins, etc. should be removed.
18. Ski's must be installed with the ski tips facing the rear of the vehicle when being transported.
19. Check the load's initial security after a short distance and at regular intervals on longer drives, at highway speeds, or on bumpy roads. When required, tighten the load's fastening straps.
20. When carrying taller items such as upright bicycles, the total height of the vehicle rises significantly. Use caution when clearance is low or when entering parking structures.
21. When a load is carried on the roof, the vehicle's handling and braking behavior can change, and it is more susceptible to cross-winds.
22. The vehicle's speed must always be adjusted to the load being transported as well as current driving conditions, such as road type, road quality, wind conditions, traffic intensity, and relevant speed limits, but speeds must never exceed 80MPH (130 km/h). Speed limits and other traffic restrictions must always be followed.
23. Drive slowly over speed bumps, with a top speed of 6 MPH (10 km/h).
24. While in use, lock any products which are equipped with locks.
25. This product may not be altered in any way.
26. The manufacturer will not be held liable for human or animal injury, property damage, or financial loss resulting from improper installation or use of the device. Always double-check that the load is properly secured

# STRONG CROSSBAR FOR RAV4



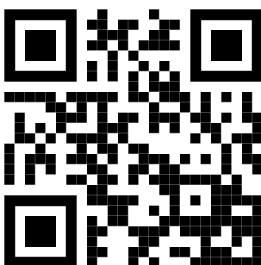
Installation  
Video

PLEASE WATCH THE INSTALLATION  
VIDEO FOR A BETTER UNDERSTANDING

WHATSAPP



FACEBOOK  
MESSENGER



**LIVE CHAT SUPPORT**

IF YOU ARE MISSING ANY PARTS OF THE  
PRODUCT OR HAVING TROUBLES IN  
THE INSTALLATION PROCESS, PLEASE  
DO NOT RETURN THE PRODUCT  
BEFORE TEXTING US VIA THE QR CODES  
BESIDE. OUR LIVE AGENTS WILL BE  
HAPPY TO ASSIST YOU.

You can also e-mail us for any other  
questions or further assistance.

[support@erkulauto.com](mailto:support@erkulauto.com)